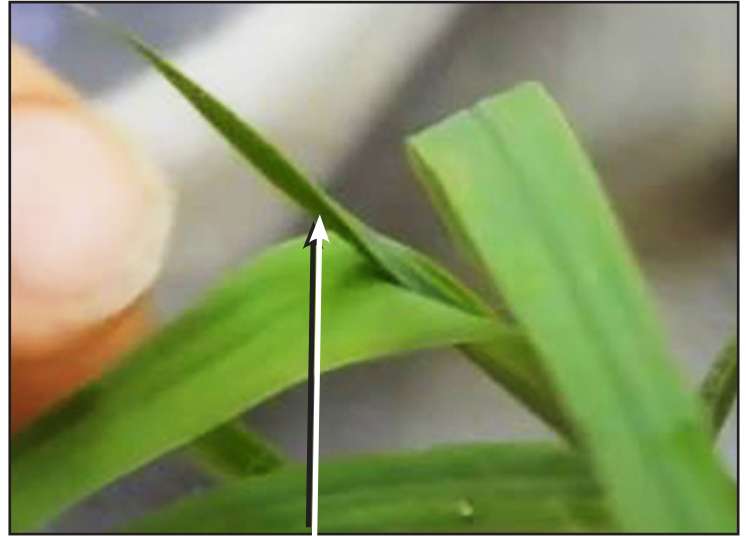


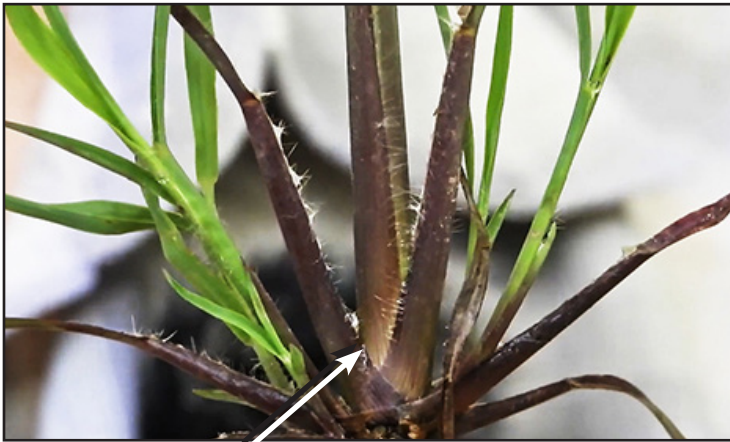
# How to Identify a Big Bluestem Seedling Data Sheet

## Key Characteristics

- Has an upright growth pattern.
- **Color characteristics:** Blue-green leaves with purple (Varies).
- Flattened tiller bases that you cannot roll between your fingers.
- Coarse white hairs on tillers and lower half/base of leaves.
- The emergent leaves come out rolled into a tube.
- Ragged, soft and membranous ligule at junction of sheath and leaf.
- The seed that the seedling emerged from should still be attached to the plant between the roots and the above ground base of the seedling.



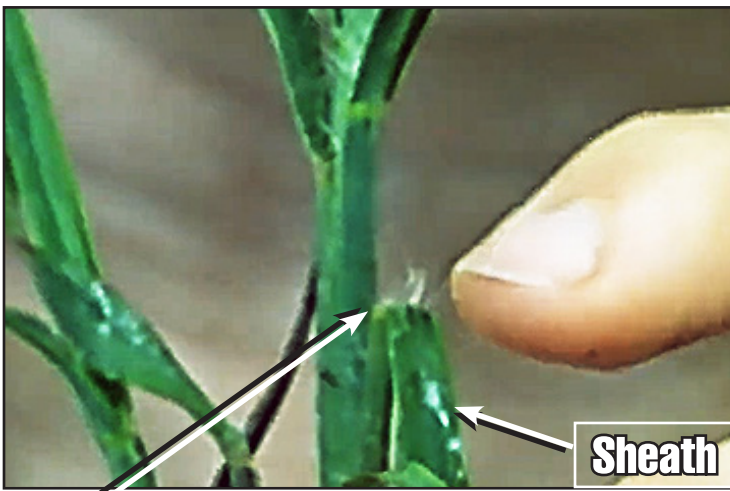
**Rolled Emergent Leaf @ TS 5:52**



**Flattened Tiller Base @ TS 3:33**



**Hairs On The Tillers @ TS 4:37**



**Ragged Membranous Ligule @ TS 7:04**



**Upright Growth Pattern @ TS 1:15**